

Working and Recreating on Our State Lands





Our State Lands

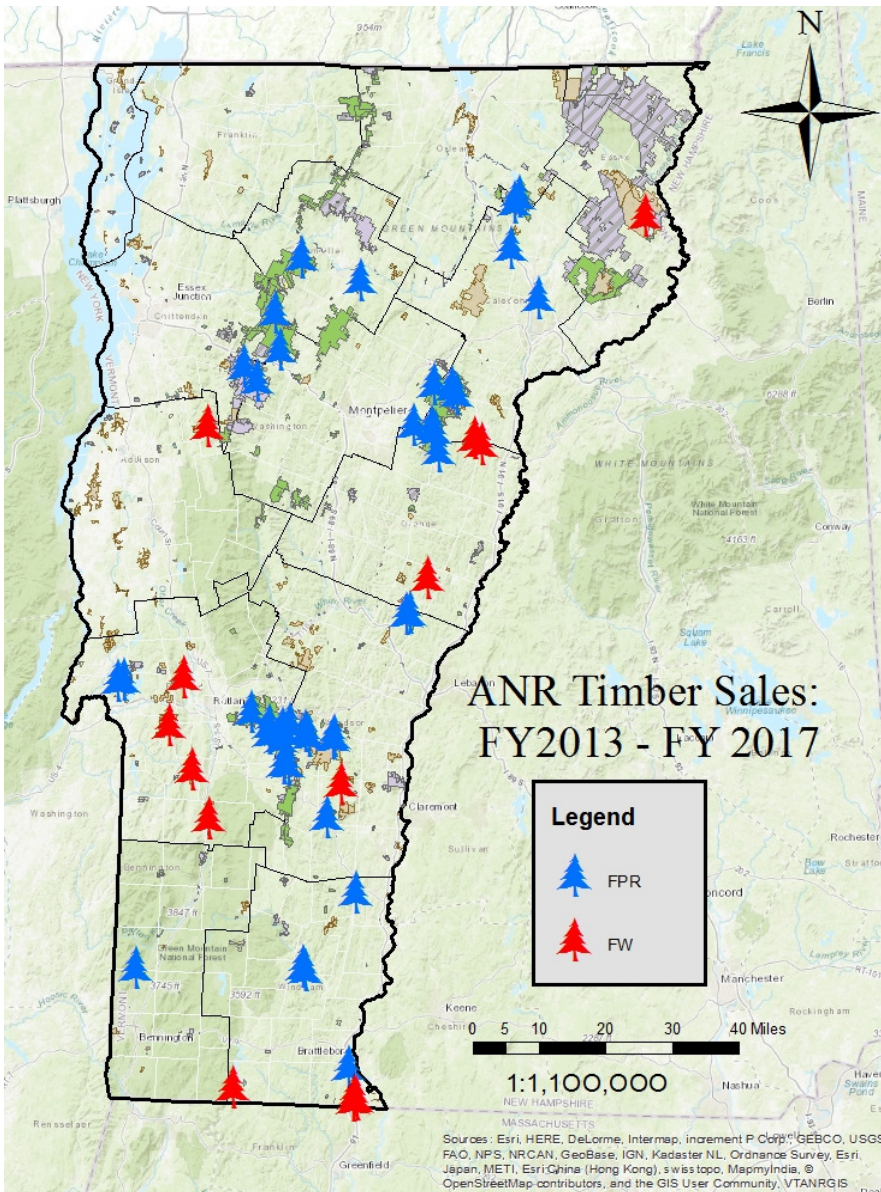
Contribute to Our Working Lands and Recreation Economies

- **227,550 Acres, FPR**
- **124,619 Acres, DFW**
- **1,881 Acres, DEC**



Timber Sales

42 projects over the 5 last years





Timber Volume

Over the last 5 years: 2013 – 2017

- **3,556** Acres
- **5,692,000** Board Feet
- **13,385** Cords of Firewood

Vermont State Lands Contribute to Our Working Forest Economy



Timber Value

Gross Revenue	Administrative Cost	Net Revenue
\$2,194,877	\$722,312 or \$223 per acre	\$1,472,656 or \$443 per acre

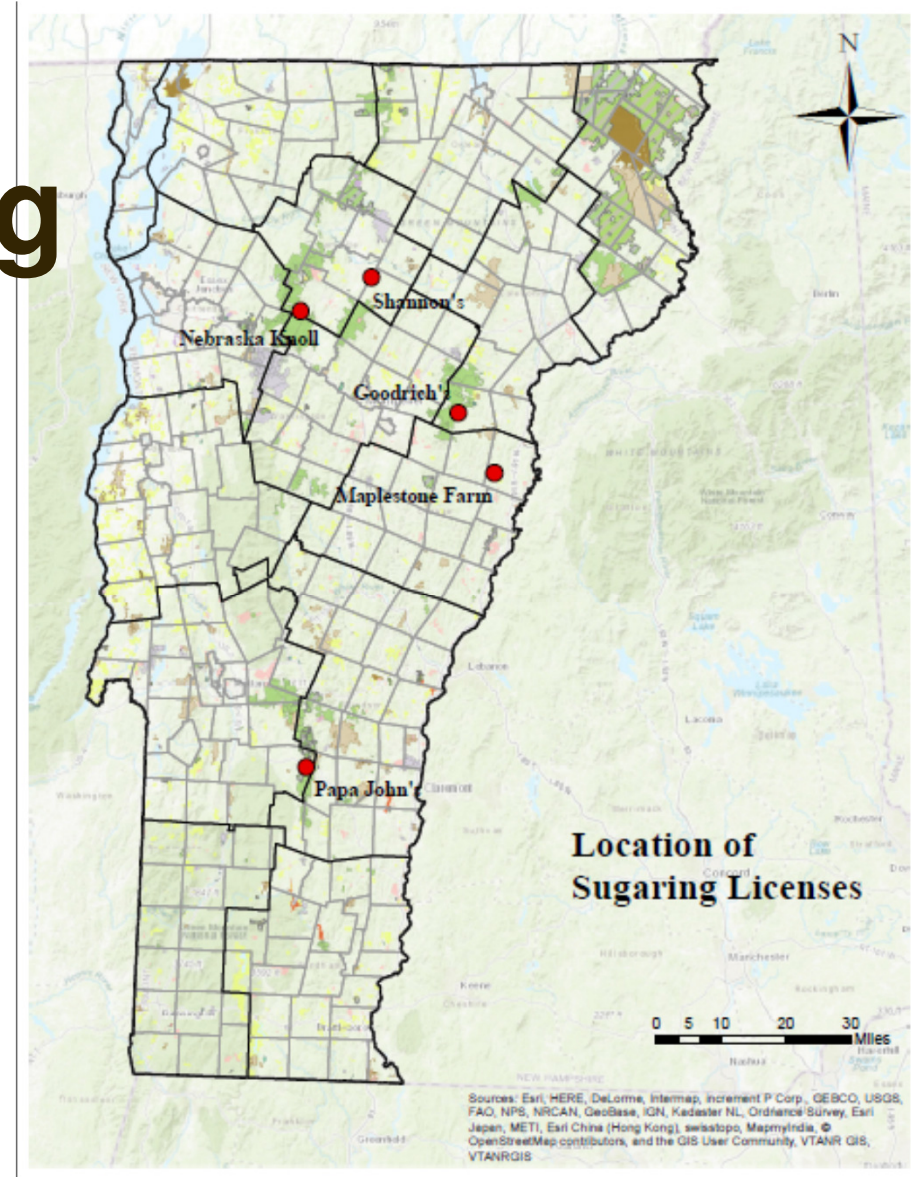




Maple Sugaring

Vermont State Lands Contribute

- **5** Sugarmakers
- **326** Acres
- **13,385** Taps





Agricultural Leases & Licenses

Vermont State Lands Contribute to Our Working Agricultural Economy

- **32** Parcels
- **1,200** Acres





Recreation

- **1,000's** of miles of trails and forest roads
- Many user groups
- Partnerships help maintain the network



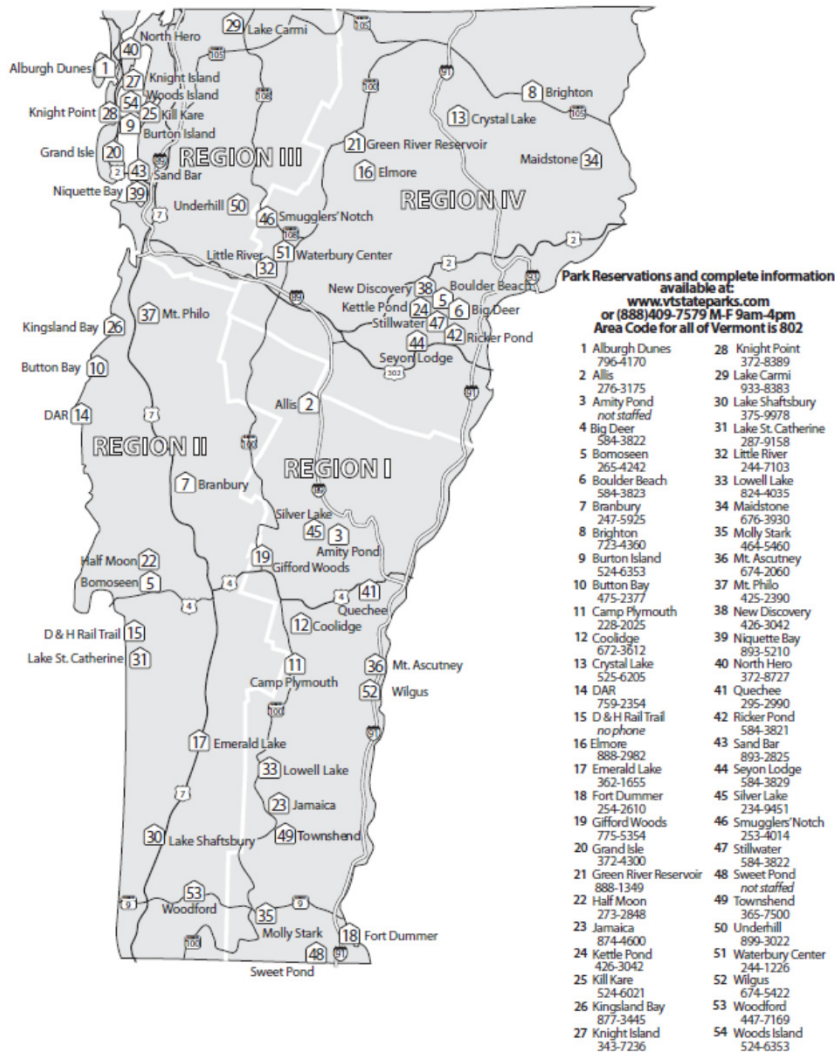
Vermont State Lands Contribute to Our Growing Outdoor Recreation Economy



State Parks

Vermont State Parks Contribute High Quality Outdoor Recreation Facilities

VERMONT STATE PARKS LOCATOR



State Parks

- **55** developed park areas



950,803

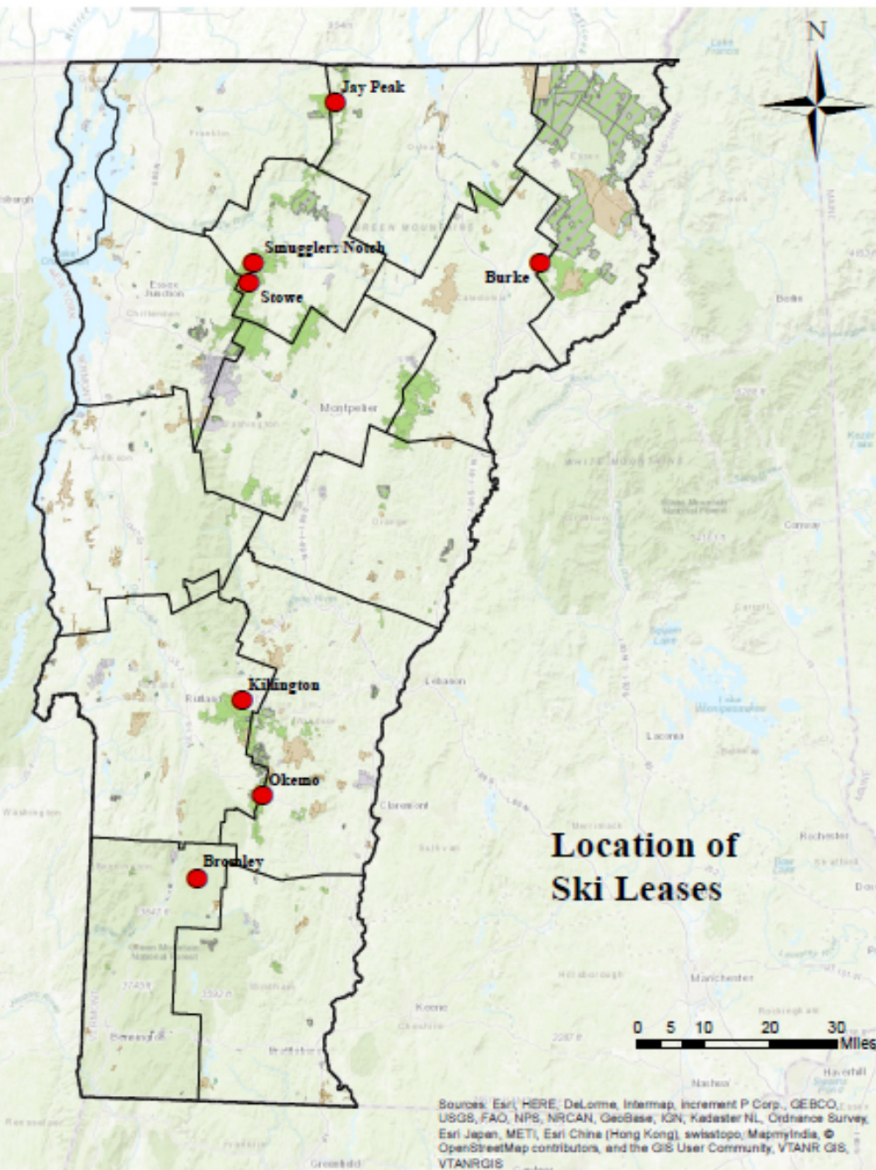
Visitors in 2017 -
a **40%** increase in **10**
years

\$6,372,30
9

Gross sales in
2017

\$87,900,00
0

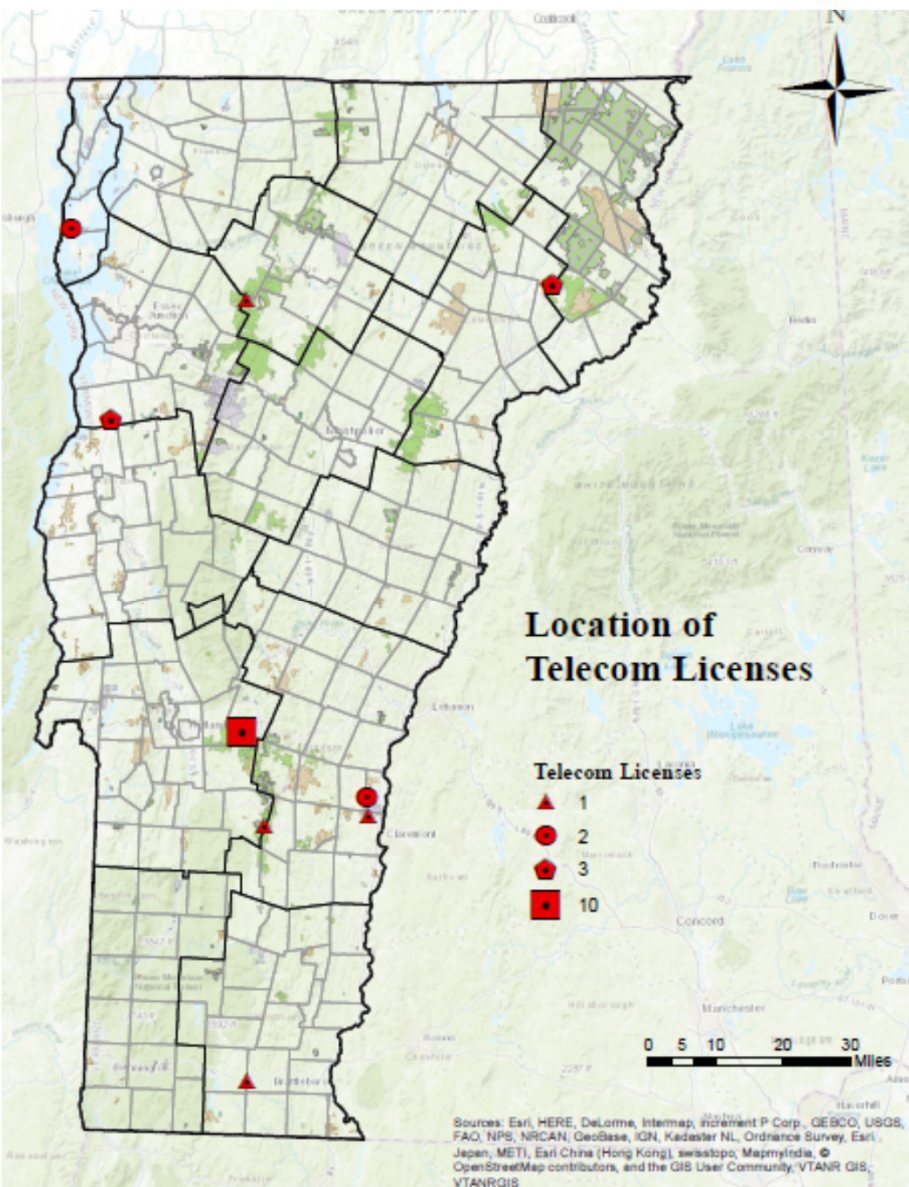
Spending by park
visitors in 2017



Other Uses

Vermont State Lands
Contribute to Our **Ski Industry**

- Ski Lease Payments
 - **\$2,994,584 - FY17**
 - **\$2,408,279 - FY16**



Other Uses

Vermont State Lands Contribute to Our Telecommunications Network

- Telecommunication License Payments
 - **\$102,116 - FY17**



Other Uses

**Vermont State Lands Contribute to
Vermonters Working and Playing
Outdoors**

- **Special Use Permits**
 - 550 +/- Permits annually
 - \$250,000 Gross revenue annually



Lands and Facilities Trust Fund

Advances the Management of Our Lands, Facilities and Recreational Assets

